

**RESEARCH AND INNOVATION DEVELOPMENT OFFICE**  
as at 1 November 2017

**CHART 1**  
**DIRECTOR'S OFFICE**

Director  
**Michael Millan**

DOCTORAL  
SCHOOL  
Director:  
**Alan White**

ENTERPRISE  
PARTNERSHIPS  
Assistant  
Director:  
**Vacancy**

STRATEGIC  
INNOVATION  
Assistant  
Director:  
**Fiona Bodle**

POST-AWARD  
MANAGEMENT &  
COMMERCIALISATION  
Head:  
**Julia Marsh**

RESEARCH  
EXCELLENCE  
AND  
ENHANCEMENT  
Head:  
**Tim Brooks**

RESEARCH AND  
INNOVATION  
FUNDING  
DEVELOPMENT  
Assistant Director:  
**Hitesh Patel**  
(starting 09.10.17)

For team structure  
see **Chart 2**

For team structure  
see **Chart 3**

For team structure  
see **Chart 4**

For team structure  
see **Chart 5**

For team structure  
see **Chart 6**

For team structure  
see **Chart 7**

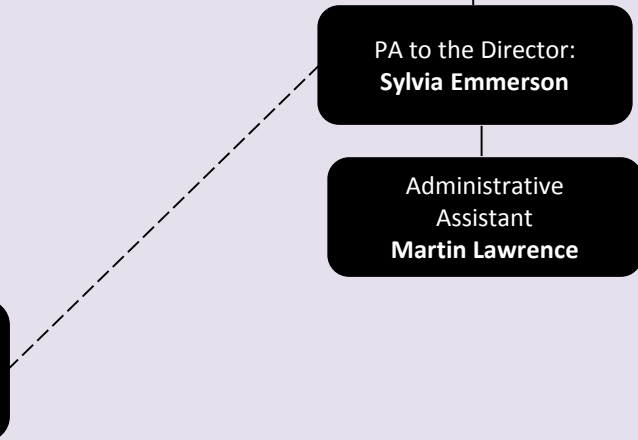
MARKETING AND  
COMMUNICATIONS  
Manager:  
**Alex Foster**

RESEARCH ETHICS AND  
INTEGRITY  
Manager:  
**Julie Scott**

PA to the Director:  
**Sylvia Emmerson**

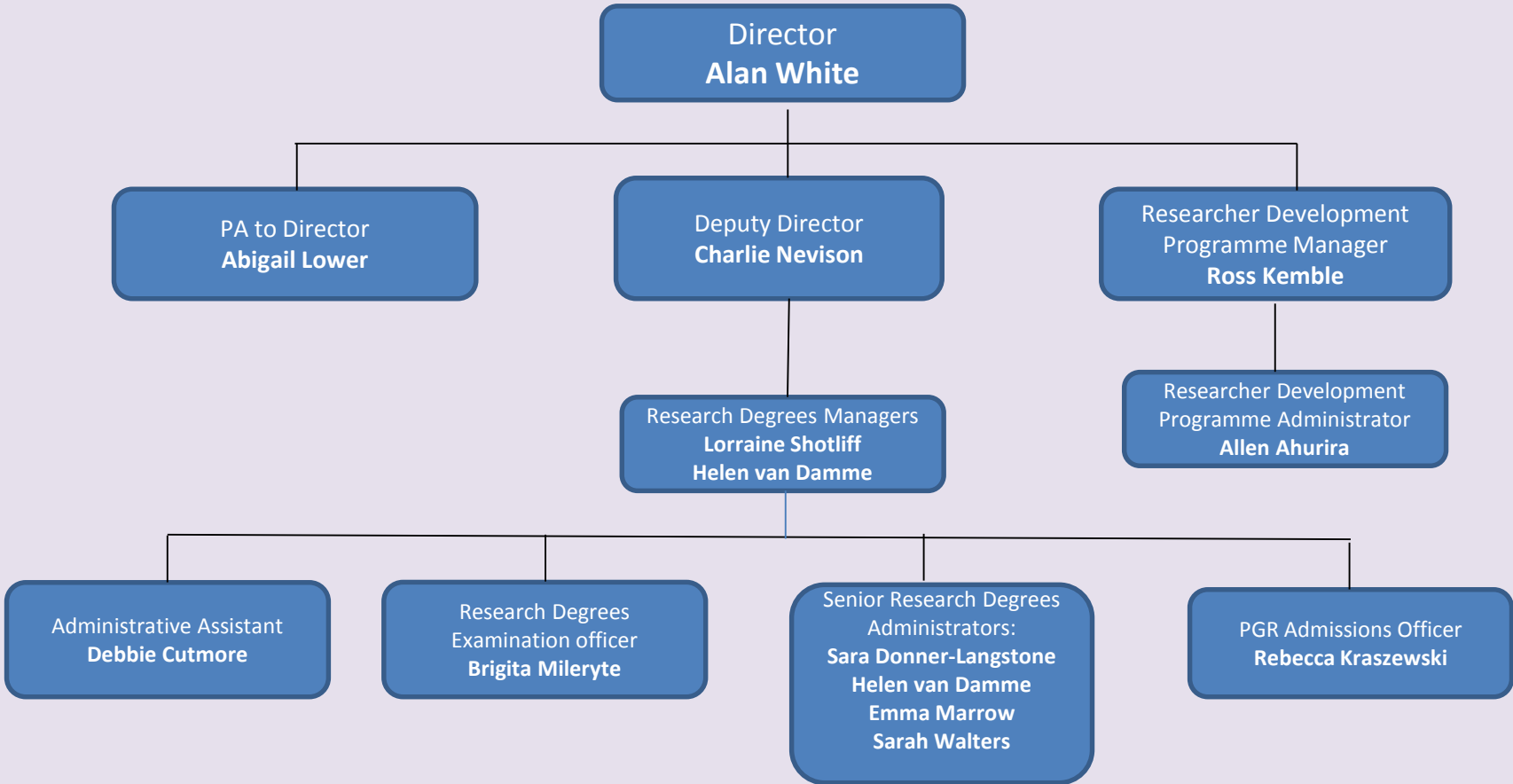
Administrative  
Assistant  
**Martin Lawrence**

Research Ethics  
Subcommittee Secretary  
and Administrator  
**Lauretta Olusoga (Temp)**



**RESEARCH AND INNOVATION DEVELOPMENT OFFICE  
as at 1 November 2017**

**CHART 2  
DOCTORAL SCHOOL**



**RESEARCH AND INNOVATION DEVELOPMENT OFFICE  
as at 1 November 2017**

**CHART 3  
ENTERPRISE PARTNERSHIPS**

Assistant Director  
**Vacancy**

Partnership Development  
Managers  
**Graeme Hodgson**  
**Amy Wilson**  
**Vacancy x 2**

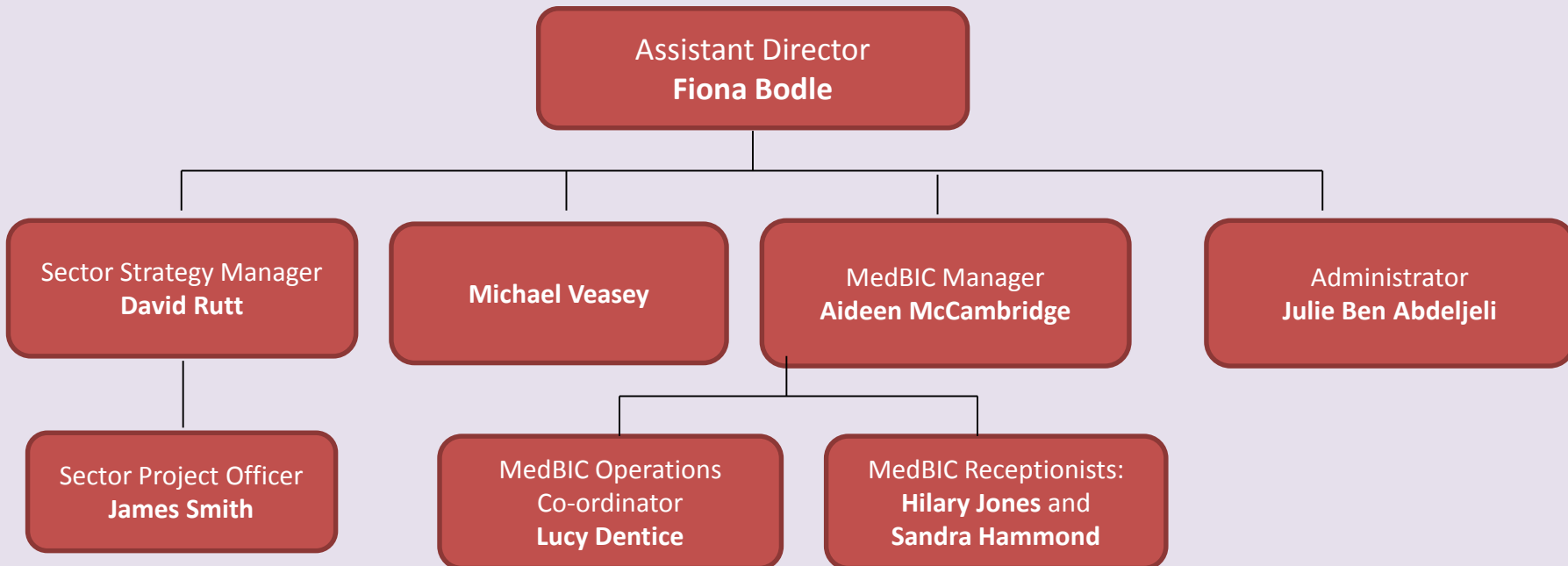
Senior Business  
Development Manager  
**Simon Daly**

Administrator  
**Olamide Omolafe (Temp –  
covering for Holly Clover  
while on secondment)**

Business Development  
Managers:  
**Richard Allin**  
**Tammy Au**  
**Vacancy x 1**

**RESEARCH AND INNOVATION DEVELOPMENT OFFICE  
as at 1 November 2017**

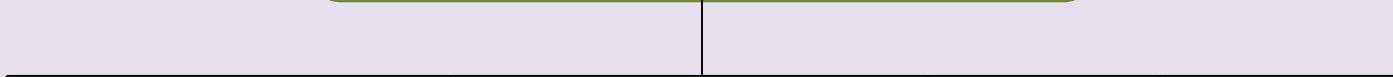
**CHART 4  
STRATEGIC INNOVATION**



**RESEARCH AND INNOVATION DEVELOPMENT OFFICE  
as at 1 November 2017**

**CHART 5  
POST-AWARD AND COMMERCIALISATION**

**Head of Post-Award and Commercialisation  
Julia Marsh**



**Research Grants Manager  
Sarah Lamont**

**Commercialisation Officer  
Vacancy**

**ERDF KEEP+ Project Team  
Carole Randall  
Cheryl Cook  
Kayleigh Parkes**

**Post Award Innovation  
and Knowledge Exchange  
Grants Manager  
Louise Antoniou**

**ERDF Projects Manager – until  
1.1.2018  
Holly Clover (on secondment)**

**RESEARCH AND INNOVATION DEVELOPMENT OFFICE  
as at 1 November 2017**

**CHART 6  
RESEARCH EXCELLENCE AND ENHANCEMENT**

**Head of Research Excellence and Enhancement  
Tim Brooks**

**Assistant REF  
Manager  
Jill Smit**

**Research  
Development  
Manager  
Christina  
Greenwood**

**Research  
Systems  
Co-ordinator  
Vacancy**

**Research  
Performance  
Analyst  
Vacancy**

**RESEARCH AND INNOVATION DEVELOPMENT OFFICE**  
**as at 1 November 2017**

**CHART 7**  
**RESEARCH AND INNOVATION FUNDING DEVELOPMENT**

