

RESEARCH AND INNOVATION DEVELOPMENT OFFICE
as at April 2019

CHART 1
DIRECTOR'S OFFICE

Director
Michael Millan

ENTERPRISE
PARTNERSHIPS
Assistant
Director:
Jenny Young

For team structure
see **Chart 2**

STRATEGIC
INNOVATION
Assistant
Director:
Fiona Bodle

For team structure
see **Chart 3**

RESEARCH AND
INNOVATION
FUNDING
DEVELOPMENT
Assistant Director:
Vacancy

For team structure
see **Chart 4**

RESEARCH
EXCELLENCE
AND
ENHANCEMENT
Head:
Tim Brooks

For team structure
see **Chart 5**

POST-AWARD
MANAGEMENT &
COMMERCIALISATION
Head:
Carole Randall

For team structure
see **Chart 6**

DOCTORAL
SCHOOL
Director:
Alan White

For team structure
see **Chart 7**

MARKETING AND
COMMUNICATIONS
Manager:
Nabila Aslam
(maternity leave cover
for Alex Foster)

RESEARCH ETHICS AND
INTEGRITY
Manager:
Julie Scott

General Assistant and
Research Ethics
Subcommittee Secretary
Catherine Pearson

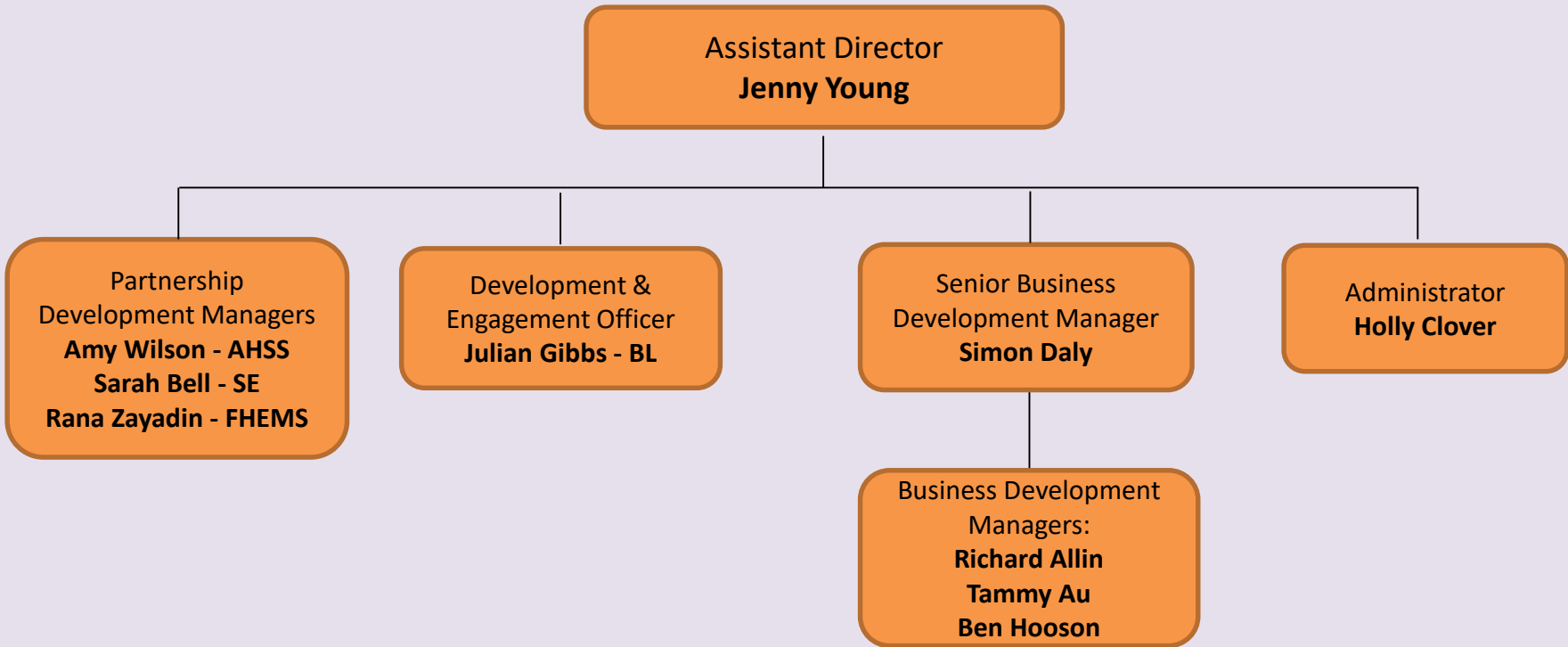
PA to the Director:
Sylvia Emmerson

Administrative
Assistant
Martin Lawrence

Administrative
Assistant
Martin Lawrence

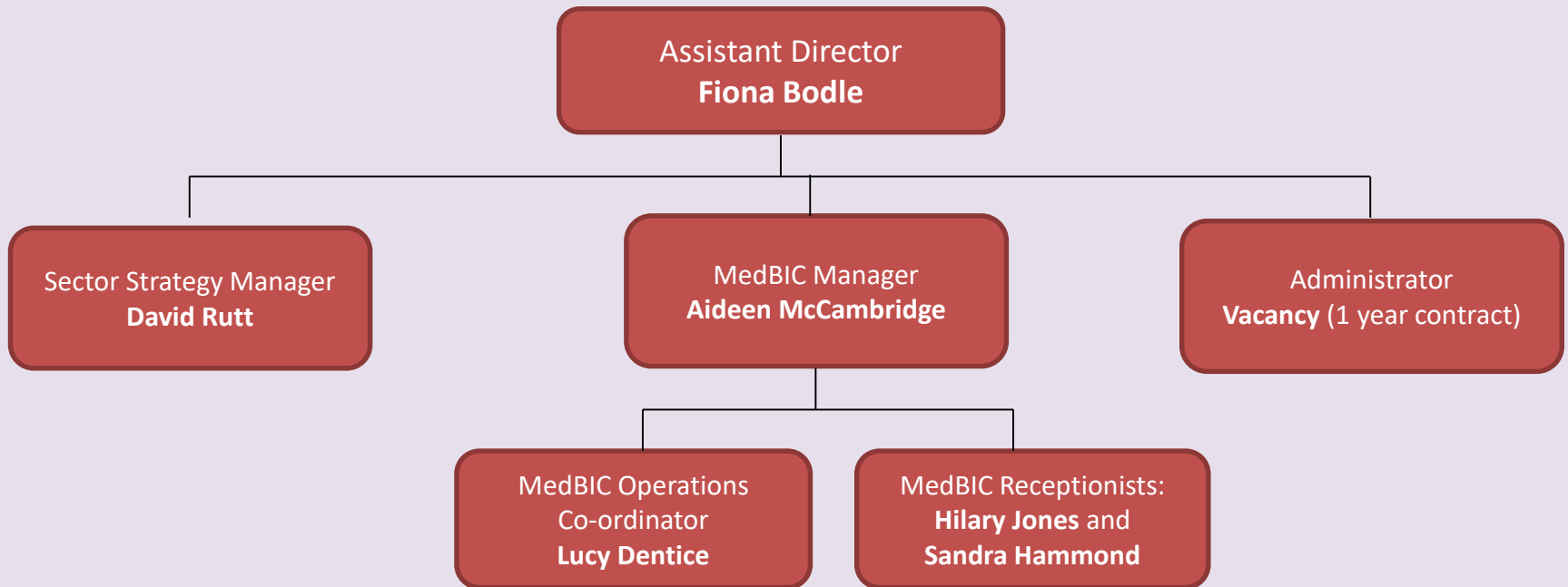
**RESEARCH AND INNOVATION DEVELOPMENT OFFICE
as at April 2019**

**CHART 2
ENTERPRISE PARTNERSHIPS**



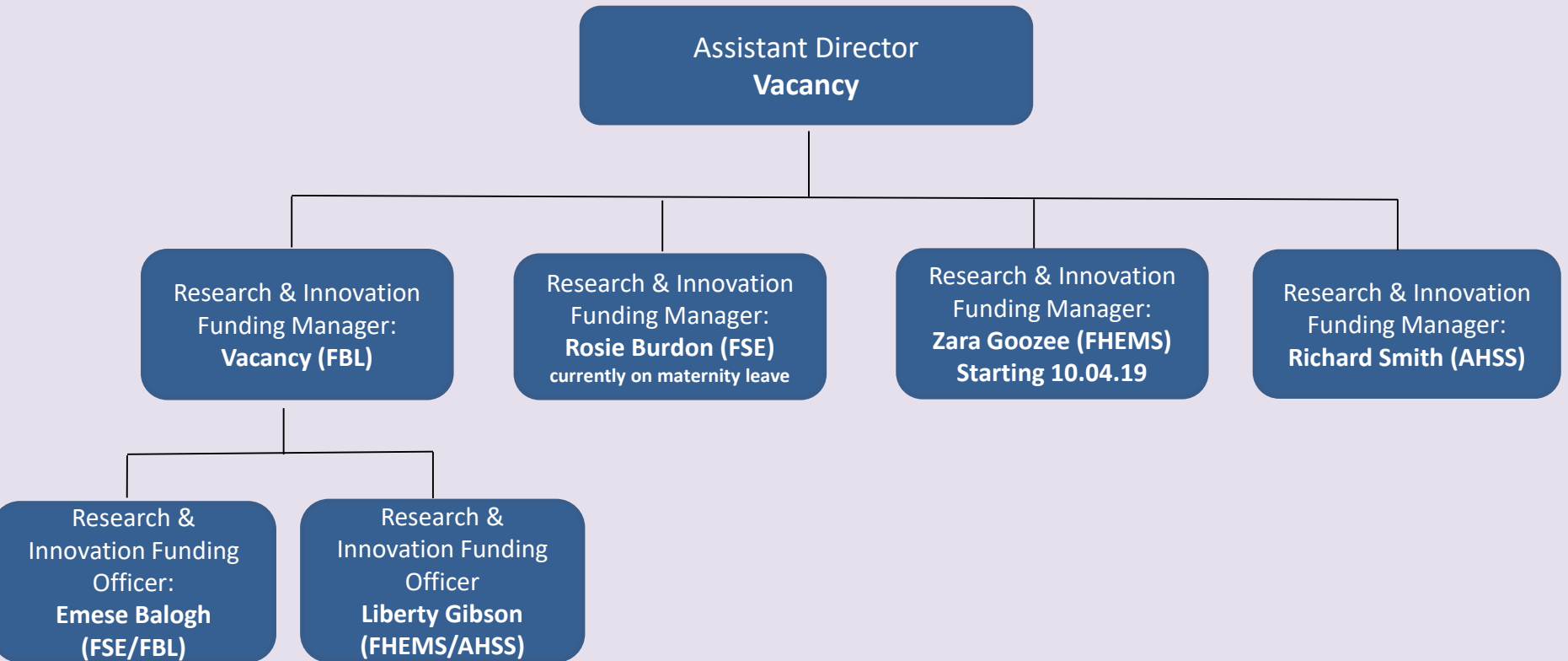
**RESEARCH AND INNOVATION DEVELOPMENT OFFICE
as at April 2019**

**CHART 3
STRATEGIC INNOVATION**



**RESEARCH AND INNOVATION DEVELOPMENT OFFICE
as at April 2019**

**CHART 4
RESEARCH AND INNOVATION FUNDING DEVELOPMENT**



RESEARCH AND INNOVATION DEVELOPMENT OFFICE as at April 2019

CHART 5 RESEARCH EXCELLENCE AND ENHANCEMENT

Head of Research Excellence and Enhancement
Tim Brooks

REF Assistant
Manager
Jill Smit

Research Excellence &
Enhancement
Administrator
Maria Farrant (Temp)

Researcher
Development
Manager
Jennie Rose
(maternity leave
cover for Chrissy
Greenwood –
returning 1 May
2019)

Research
Systems
Co-ordinator
Emma Marrow

Research Impact
Co-ordinator
Vacancy

**RESEARCH AND INNOVATION DEVELOPMENT OFFICE
as at April 2019**

**CHART 6
POST-AWARD AND COMMERCIALISATION**

Head of Post-Award and Commercialisation
Carole Randall



**RESEARCH AND INNOVATION DEVELOPMENT OFFICE
as at April 2019**

**CHART 7
DOCTORAL SCHOOL**

