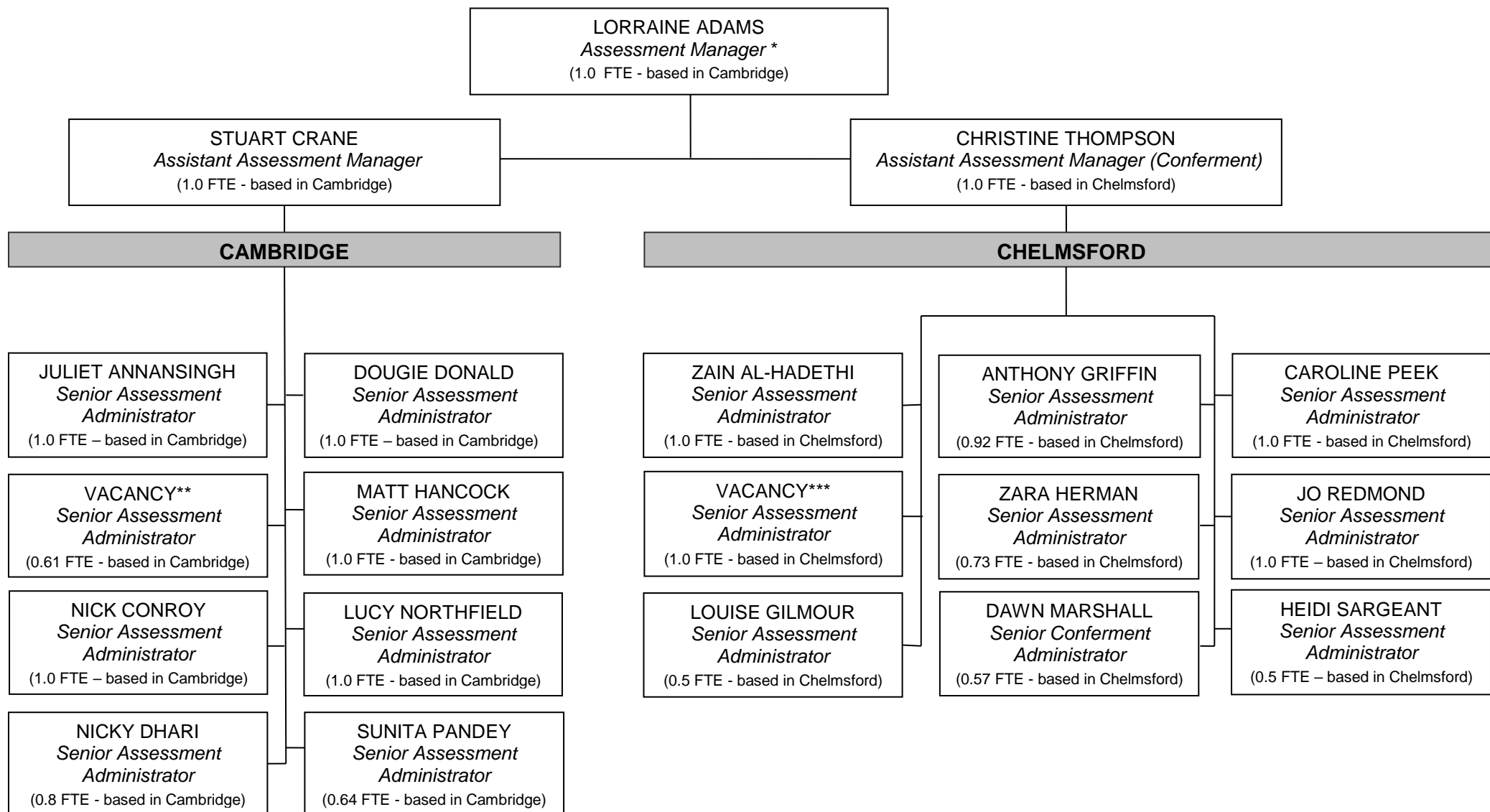


## Academic Registry – Assessment Service Staffing Structure (October 2018)



\* line managed by Deputy Academic Registrar

\*\* maternity leave (cover for 0.57 FTE of 0.61 FTE being provided via Chelmsford team)

\*\*\* maternity leave (cover for 0.5 FTE of 1.0 FTE being provided via Chelmsford team)