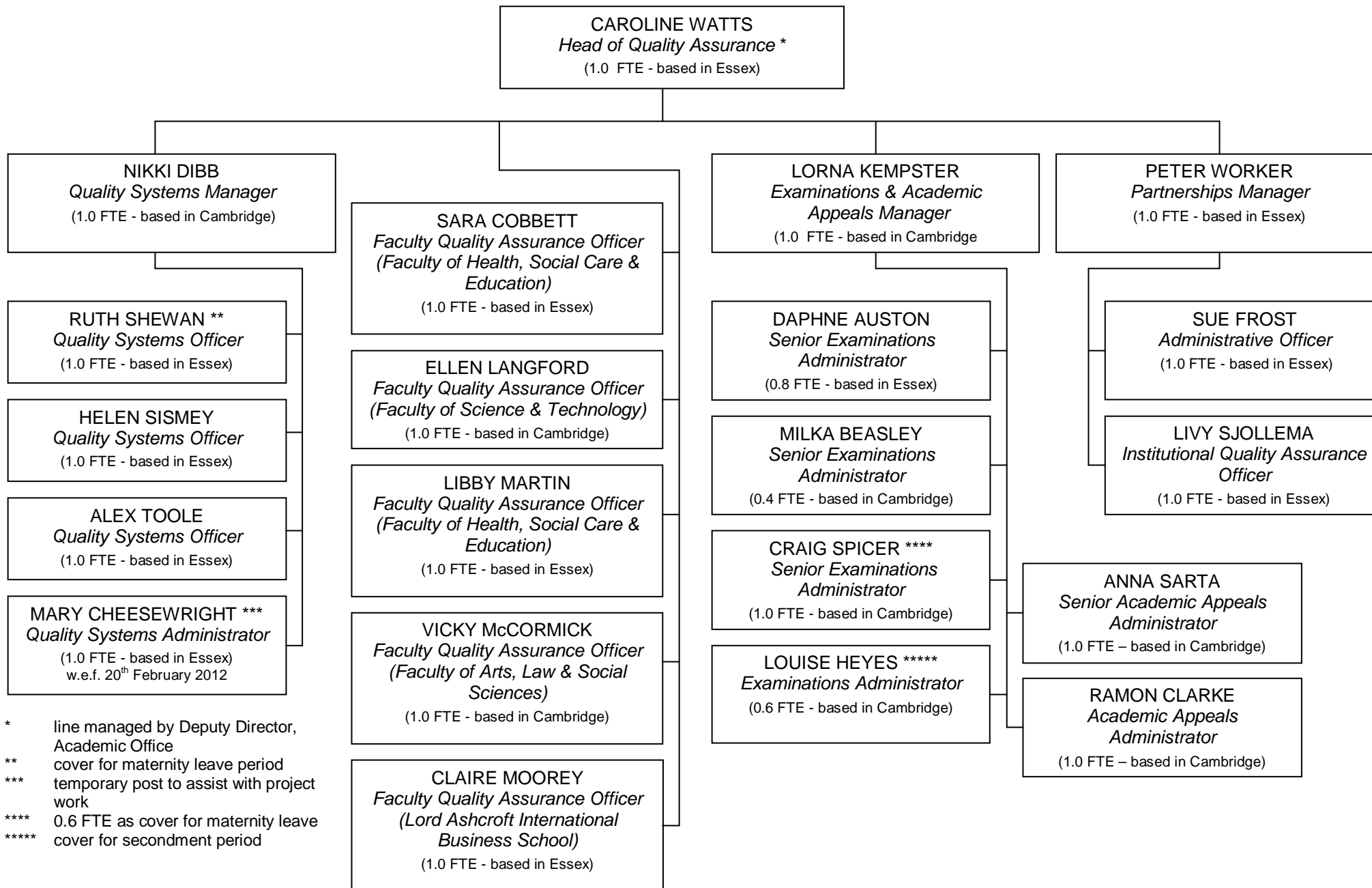


## Academic Office – Quality Assurance Unit Staffing Structure (April 2012)



\* line managed by Deputy Director, Academic Office  
 \*\* cover for maternity leave period  
 \*\*\* temporary post to assist with project work  
 \*\*\*\* 0.6 FTE as cover for maternity leave  
 \*\*\*\*\* cover for secondment period